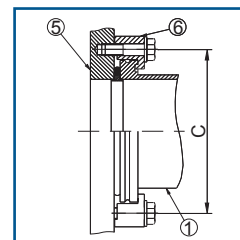
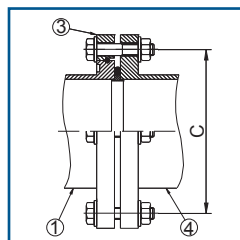
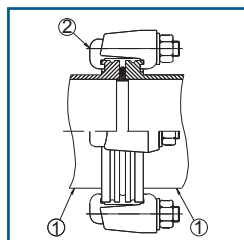
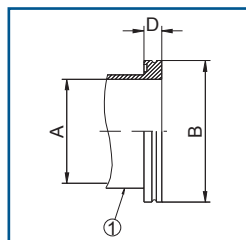


Clamping flanges and fittings conform to PNEUROP 6606/1981 and DIN 28404 standards.  
 Dimensions: DN 63 - 100 - 160 - 200 - 250 - 320 - 400 - 500 - 630 - 800 - 1000 ISO.  
 Flanges and fittings are made of stainless steel AISI 304 L. Elastomer or metal seals.



1. Clamping flange      2. Clamping screw      3. Collar flange      4. Bolted flange      5. Base plate      6. Wall clamps



### TECHNICAL DATA

Tightness better than  $1 \times 10^{-9}$  mbar l/s;

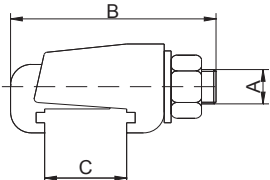
Maximum bakeout temperature for the seals:

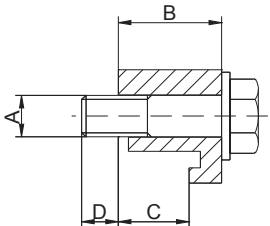
Buna 90°C - Viton 145°C - Aluminium 200°C

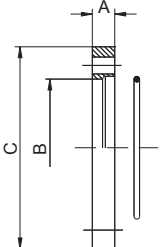
Nominal diameter	A	B	D	Clamping screw	Number of clamping screw	C pitch circle diam.	Screw for collar ring flange	Number of holes in collar ring flange	Screw for claw grip	Number of claw grip
DN63	70	95	12	M 10X21	4	110	M 8X40	4	M 8X30	4
DN100	102	130	12	M 10X21	4	145	M 8X40	8	M 8X30	8
DN160	153	180	12	M 10X21	4	200	M 10X50	8	M 10X35	8
DN200	213	240	12	M 10X21	6	260	M 10X50	12	M 10X35	12
DN250	261	290	12	M 10X21	6	310	M 10X50	12	M 10X35	12
DN320	318	370	17	M 10X31	8	395	M 12X60	12	M 12X40	12
DN400	400	450	17	M 10X31	8	480	M 12X60	16	M 12X40	16
DN500	501	550	17	M 10X31	12	580	M 12X60	16	M 12X40	16
DN630	651	690	22	M 12X80	12	720	M 12X70	20	M 12X50	20

Diam. 800 and 1000 available on request. Not-standard dimensions available on request.

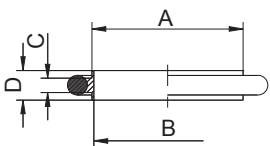
## CONNECTION ELEMENTS

		Materials	Nominal diameter	A	B	C	D	E	Code
<i>Clamps</i>									
	AISI 304	DN63	M10	60	23,6				010100144
		DN100	M10	60	23,6				010100144
		DN160	M10	60	23,6				010100144
		DN200	M10	60	23,6				010100144
		DN250	M10	60	23,6				010100144
		DN320	M10	70	35,6				010100150
		DN400	M10	70	35,6				010100150
		DN500	M10	70	35,6				010100150
		DN630	M12	95	39,5				010100153

<i>Wall clamps</i>									
	AISI 304	DN63	M8	23,2	14	6,8			010100154
		DN100	M8	23,2	14	6,8			010100154
		DN160	M10	24,8	15,6	10,2			010100157
		DN200	M10	24,8	15,6	10,2			010100157
		DN250	M10	24,8	15,6	10,2			010100157
		DN320	M12	29,8	20,6	10,2			010100161
		DN400	M12	29,8	20,6	10,2			010100162
		DN500	M12	29,8	20,6	10,2			010100162
		DN630	M12	34,8	25,6	15,2			010100164

<i>Collar ring flanges</i>									
	AISI 304 L	DN63	12	95,5	130				010100187
		DN100	12	130,5	165				010100189
		DN160	16	180,7	225				010100191
		DN200	16	240,7	285				010100192
		DN250	16	290,7	335				010100193
		DN320	20	370,8	425				010100194
		DN400	20	450,8	510				010100195
		DN500	20	550,8	610				010100196

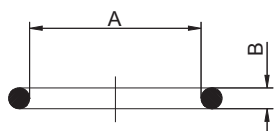
## SEALS

<i>Centering rings</i>									
	AISI 304 L Viton	DN63	70	68	3,9	8			010101061
		DN100	102	100	3,9	8			010101063
		DN160	153	148	5,6	14			010101065
		DN200	213	208	5,6	14			010101066
		DN250	261	256	5,6	14			010101067
		DN320	318	313	5,6	14			010101068
		DN400	400	395	5,6	14			010101069
		DN500	501	495	5,6	14			010101070
		DN630	651	645	5,6	14			010101071

<i>Centering rings with outer ring</i>									
AISI 304 L Viton	DN63								010101700
	DN100								010101701
	DN160								010101702
	DN200								010101703
	DN250								010101704
	DN320								010101705
	DN400								010101706
Al Viton	DN63								010101710
	DN100								010101711
	DN160								010101712
	DN200								010101713
	DN250								010101714
	DN320								010101715
DN400								010101716	

## SEALS

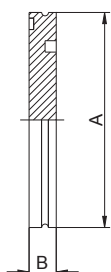
Materials	Nominal diameter	A	B	C	D	E	Code
<i>O-Rings</i>							
Viton	DN63	75,6	5,33		set 10 pcs		010100334
	DN100	107,3	5,33		set 5 pcs		010100336
	DN160	164,5	6,99		set 5 pcs		010100338
	DN200	215,3	6,99		set 5 pcs		010100339
	DN250	266,1	6,99		set 5 pcs		010100340
	DN320	329,6	6,99		set 3 pcs		010100341
	DN400	405,3	6,99		set 3 pcs		010100342
	DN500	506,9	6,99		set 3 pcs		010100343
	DN630	658,9	6,99		set 3 pcs		010100344
Buna	DN63	75,6	5,33		set 10 pcs		010100345
	DN100	107,3	5,33		set 10 pcs		010100347
	DN160	164,5	6,99		set 10 pcs		010100349
	DN200	215,3	6,99		set 10 pcs		010100350
	DN250	266,1	6,99		set 10 pcs		010100351
	DN320	329,6	6,99		set 5 pcs		010100352
	DN400	405,3	6,99		set 5 pcs		010100353
	DN500	506,9	6,99		set 5 pcs		010100354
	DN630	658,9	6,99		set 5 pcs		010100355



## FLANGES

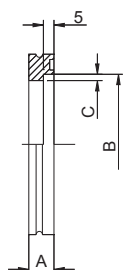
### Blank flanges

AISI 304 L	DN63	95	12				010100197
	DN100	130	12				010100199
	DN160	180	12				010100201
	DN200	240	12				010100202
	DN250	290	12				010100203
	DN320	370	17				010100204
	DN400	450	17				010100205
	DN500	550	17				010100206
	DN630	690	22				010100207



### Welding flanges

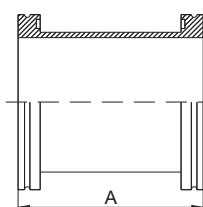
AISI 304 L	DN63	12	76	3			010100165
	DN100	12	108	3			010100167
	DN160	12	159	3			010100169
	DN200	12	219	3			010100170
	DN250	12	267	3			010100171
	DN320	17	324	3			010100172
	DN400	17	406	3			010100173
	DN500	17	508	4			010100174
	DN630	22	660	5			010100175



## PIPE FITTINGS

### Nipples

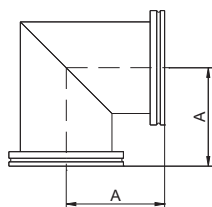
AISI 304 L	DN63	88					010100588
	DN100	108					010100590
	DN160	138					010100592
	DN200	200					010100593
	DN250	208					010100594
	DN320	300					010100595
	DN400	350					010100596
DN500	400					010100597	



**PIPE FITTINGS**

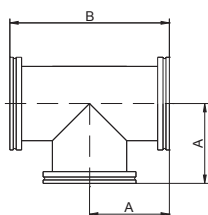
Materials	Nominal diameter	A	B	C	D	E	Code
-----------	------------------	---	---	---	---	---	------

*90° Elbows*



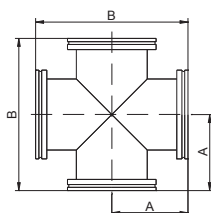
AISI 304 L	DN63	88					010100218
	DN100	108					010100220
	DN160	138					010100222
	DN200	200					010100223
	DN250	208					010100224
	DN320	300					010100225

*90° Tees*



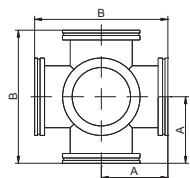
AISI 304 L	DN63	88	176				010100226
	DN100	108	216				010100228
	DN160	138	276				010100230
	DN200	200	400				010100231
	DN250	208	416				010100232
	DN320	300	600				010100233

*90° Crosses*



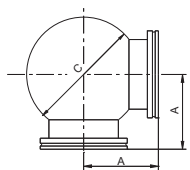
AISI 304 L	DN63	88	176				010100234
	DN100	108	216				010100236
	DN160	138	276				010100238
	DN200	200	400				010100239
	DN250	208	416				010100240
	DN320	300	600				010100241

*90° Crosses 6 portes*



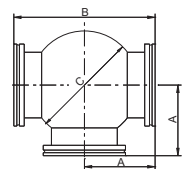
AISI 304 L	DN63	88	176				010101073
	DN100	108	216				010101075
	DN160	138	276				010101077
	DN200	200	400				010101078
	DN250	208	416				010101079

*Elbows with spherical body*



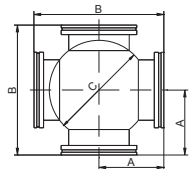
AISI 304 L	DN63	88	176	120			010100367
	DN100	108	216	175			010100369
	DN160	138	276	250			010100371
	DN200	200	400	350			010100372

*Tees with spherical body*



AISI 304 L	DN63	88	176	120			010100494
	DN100	108	216	175			010100496
	DN160	138	276	250			010100498
	DN200	200	400	350			010100499

*Crosses with spherical body*

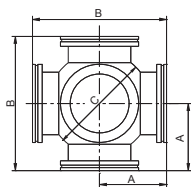


AISI 304 L	DN63	88	176	120			010100500
	DN100	108	216	175			010100502
	DN160	138	276	250			010100504
	DN200	200	400	350			010100505

## PIPE FITTINGS

Materials	Nominal diameter	A	B	C	D	E	Code
-----------	------------------	---	---	---	---	---	------

### Crosses 6 portes with spherical body

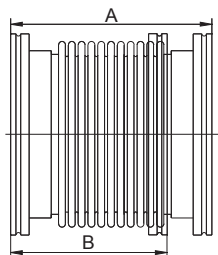


AISI 304 L	DN63	88	176	120			010101081
	DN100	108	216	175			010101083
	DN160	138	276	250			010101085
	DN200	200	400	350			010101086

On request Rial can produce special fittings as per customer's requirements

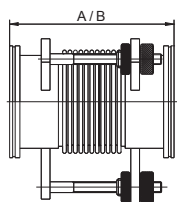
## FLEXIBLE PIPINGS

### Bellows



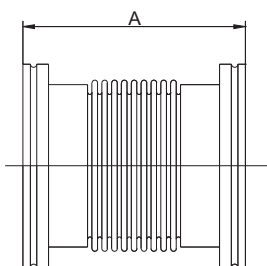
AISI 304 L AISI 316	DN63	130	117				010100260
	DN100	130	117				010100262
	DN160	150	135				010100264
	DN200	230	210				010100265
	DN250	250	230				010100266
	DN320	260	235				010100267
	DN400	260	235				010100268
	DN500	260	255				010100269

### Adjusting piece with bellows



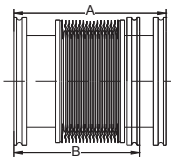
AISI 304 L	DN63	130	117				010101141
	DN100	130	117				010101143
	DN160	150	135				010101144
	DN200	230	210				010101145
	DN250	250	230				010101146

### Flexible pipes

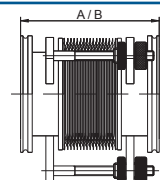


AISI 304 L	DN63	250					010101101	
		500					010101102	
		750					010101103	
		1000					010101104	
	DN100	250						010101109
		500						010101110
		750						010101111
		1000						010101112
	DN160	250						010101113
		500						010101114
		750						010101115
		1000						010101116
	DN200	250						010101117
		500						010101118
		750						010101119
		1000						010101120
	DN250	250						010101121
		500						010101122
		750						010101123
		1000						010101124
	DN320	250						010101125
		500						010101126
		750						010101127
		1000						010101128

## FLEXIBLE PIPINGS

	Materials	Nominal diameter	A	B	C	D	E	Code
<i>Diaphragm Bellows</i>								
	AISI 304 L	DN63	144	119				010101131
		DN100	161	119				010101133
		DN160	144	117				010101134
		DN200	138	116				010101135

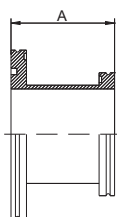
### Adjusting piece with diaphragm bellows



	AISI 304 L	DN63	144	19				010101151
		DN100	161	119				010101153
		DN160	144	117				010101154
		DN200	138	116				010101155

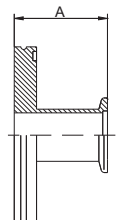
## TRANSITION PIECES

### Reducing nipples



AISI 304 L	DN100/DN63							010101401								
	DN160/DN100								90	010101403						
	DN160/DN63										010101402					
	DN200/DN160											010100212				
	DN250/DN200												010100213			
	DN320/DN250													010100214		
	DN400/DN320														010100215	
	DN500/DN400															010100216
	DN630/DN500															

### Reducing nipples for small flanges



AISI 304 L	DN63/DN25							010100254		
	DN63/DN40								50	010100255
	DN63/DN50									